



PANOTEC™

BOX ON DEMAND MACHINES



www.mdm-techno.ru
+7 (495) 788-44-75

COMPACT MIDI.....	2
COMPACT EVO.....	8
NEXTMODE 2.5.....	14
EGLUER.....	20
COMPACT 2.5.....	24
VARYPACK.....	30



COMPACT MIDI

► TECHNICAL FEATURES

CARDBOARD WIDTH	Min. 400 mm ÷ Max. 1.400 mm
CARDBOARD THICKNESS	From 2 mm to 7 mm
MIN. LENGTH OF OPEN BOX	420 mm
CARDBOARD FEED SPEED	40 m/min
FEEDING OPTIONS	Fanfold cardboard (single or 2 side by side) and/or single sheets
CONNECTION	ELECTRICAL: 400-480 V 50-60Hz
	POWER SUPPLY: 3 kVA
	COMPRESSED AIR: min. 6-7 bar (max. consumption 100NI/min)

➤ INTEGRATED SYSTEM BOX ON DEMAND



- 1 SCANPACK:** measuring station that detects the dimensions of a product or a composition of products. It sends the data to the packaging machine, which then automatically produces the correctly- sized packaging.
- 2 COMPACT MIDI 1.4:** packaging machine with integrated PRINT ON DEMAND system. This high resolution ink jet print system allows to simultaneously print and produce the box.
- 3 E-GLUER:** automated glueing station for slotted boxes.
- 4 TRANSFER STATION:** for the packed goods.

FIELDS OF APPLICATION:

- AUTOMOTIVE
- SPARE PARTS
- E-COMMERCE
- LOGISTICS

All Panotec solutions can be connected to the company network and let you receive the production data from the customer's management system.



PANOTEC s.r.l.

Via G. Polese, 2 - 31010 Cimadolmo TV
T. +39 0422 432715 F. +39 0422 1821423
www.panotec.it ■ VAT IT02462930260



➤ **COMPACT MIDI** **1.4**

TECHNICAL FEATURES



➤ COMPACT MIDI 1.4

HIGH PERFORMANCE AND LITTLE SPACE, FOR THE PRODUCTION OF SMALL TO MEDIUM SIZE BOXES IN DIFFERENT FORMATS.



➤ MANAGEMENT SOFTWARE BOXLINK™



WELCOME SCREEN



REPORTS SCREEN

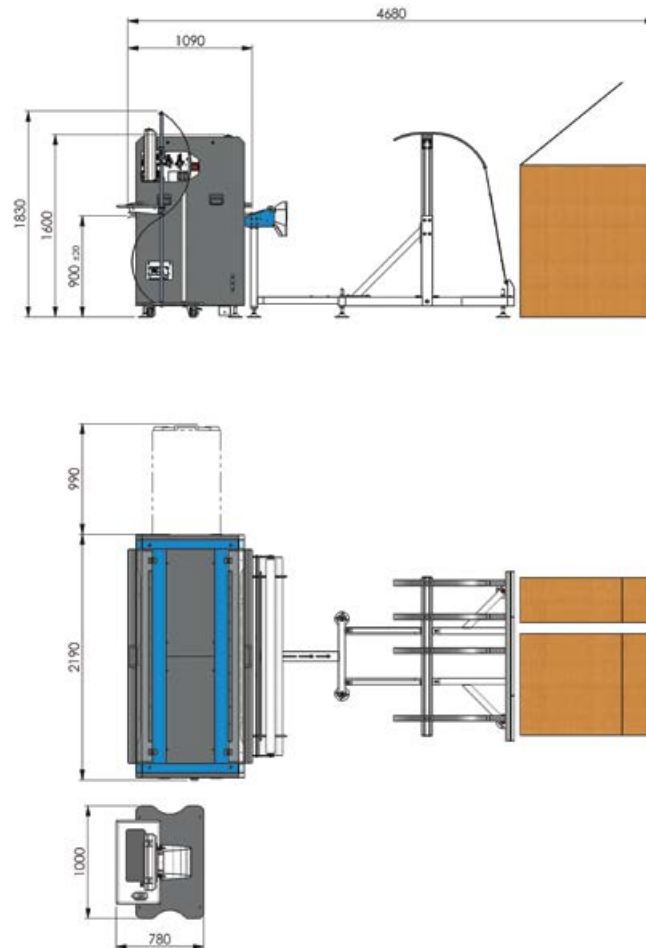


SCREEN CARDBOARD TRAYS



PRODUCTION SCREEN

► EXAMPLE OF DIMENSIONS IN FULL CONFIGURATION



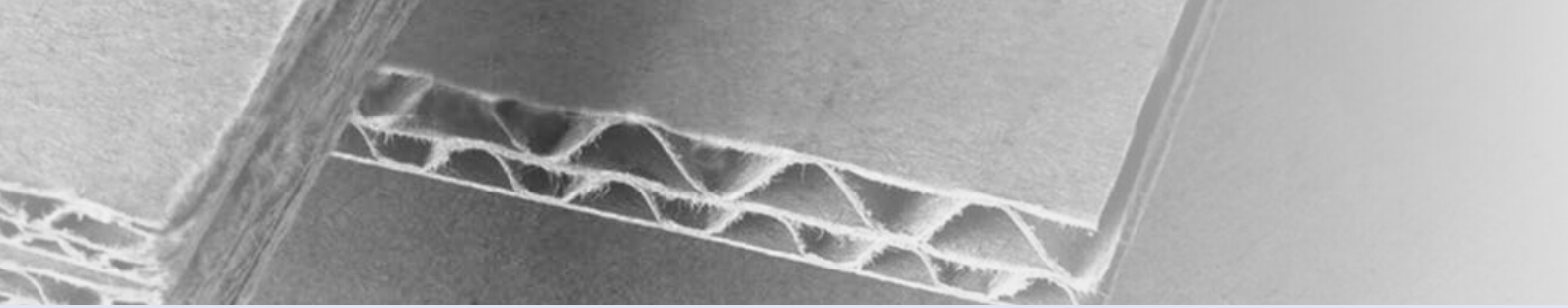
► OPERATIONAL BOX PRODUCTION UNIT

Compack MIDI is equipped with a transversal unit and up to 12 longitudinal units, that position automatically for cutting and creasing during the production process.

► OPTIONAL SUPPLEMENTARY COMPONENTS

A wide range of add-on components such as printing systems for labelling and box identification, high definition printing or devices for measuring, glueing and strapping are available for **Compack MIDI**.

We will gladly provide you with more detailed information on request.



➤ CARDBOARD FEED

AVAILABLE CARDBOARD FEED OPTIONS:

3 different cardboard feed options are available for the machine:

- fanfold form (1)
- single sheets (2)
- single sheets and fanfold form



SIDE BY SIDE

By using the Side by Side feeding system available for fanfold cardboard sheets 2 different cardboard sheets can be positioned side by side. To produce the required box the system automatically chooses the most suitable sheet.

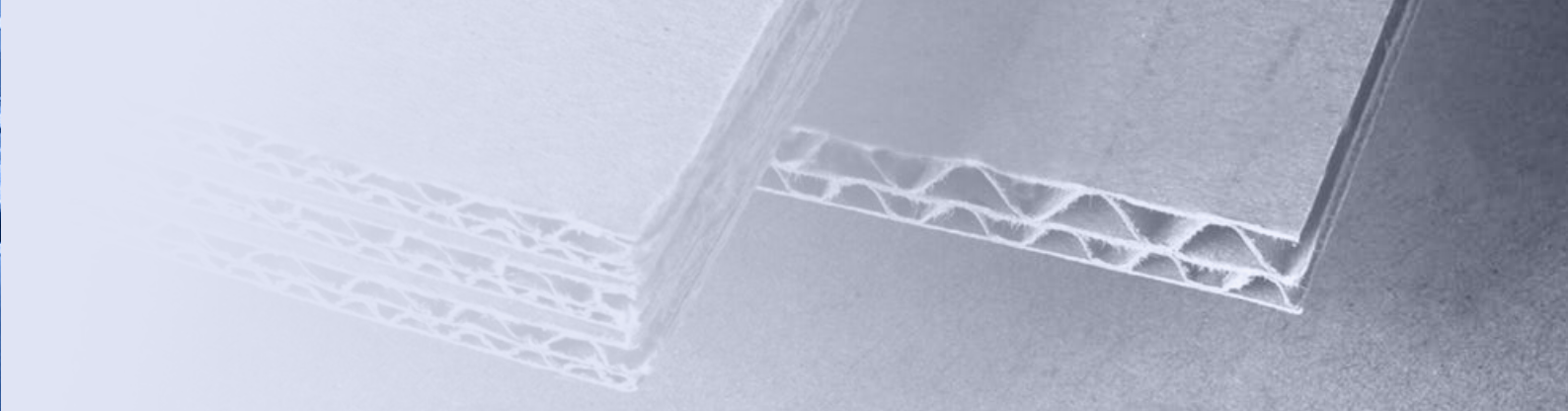




COMPACT EVO 2.5

► TECHNICAL FEATURES

CARDBOARD WIDTH	Min. 400 mm ÷ Max. 2.500 mm
CARDBOARD THICKNESS	From 2 mm to 7 mm
MIN. LENGTH OF OPEN BOX	420 mm
CARDBOARD FEED SPEED	45 m/min
CARDBOARD FEED	- Basic version: Fanfold and/or single cardboard sheets - Automated Stack Magazine: Fanfold form
CONNECTIONS	ELECTRICAL: 400-480 V 50-60Hz
	POWER SUPPLY: 3 ÷ 4 kVA, depending on the configuration
	COMPRESSED AIR: min. 6-7 bar (max. consumption 115 NI/min)



➤ AUTOMATED FANFOLD STOCK MAGAZINE

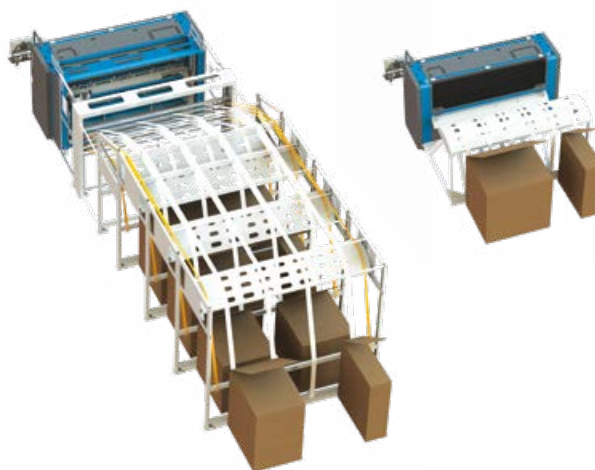
The basic model is equipped with a single fanfold magazine positioned behind the machine. The optional feature **Automated Magazine**, makes storage space behind the machine available; it provides 2, 3, or 4 depot spaces to store stacks of fanfold. **COMPACT EVO** automatically chooses the most suitable cardboard to produce the required box.



➤ SIDE BY SIDE

The Side by Side feature, available for fanfold cardboard, allows you to position the cardboard stacks side by side:

- **basic model (without automated magazine):** up to 4 cardboard side by side, for a total length of up to 2,500 mm
- **machine with automated magazine:** the number of processable cardboard doubles and up to 2 cardboard can be positioned in each depot of the magazine, for a total length of up to 2.500 mm



AVAILABLE ACCESSORIES THAT WILL:

- automatically detect when a stack is running out of cardboard and switch to the next available stack. The operator will be notified about which stacks need to be replaced
- allow you to use very high cardboard stacks (220 cm)

All Panotec solutions can be connected to the company network and let you receive the production data from the customer's management system.



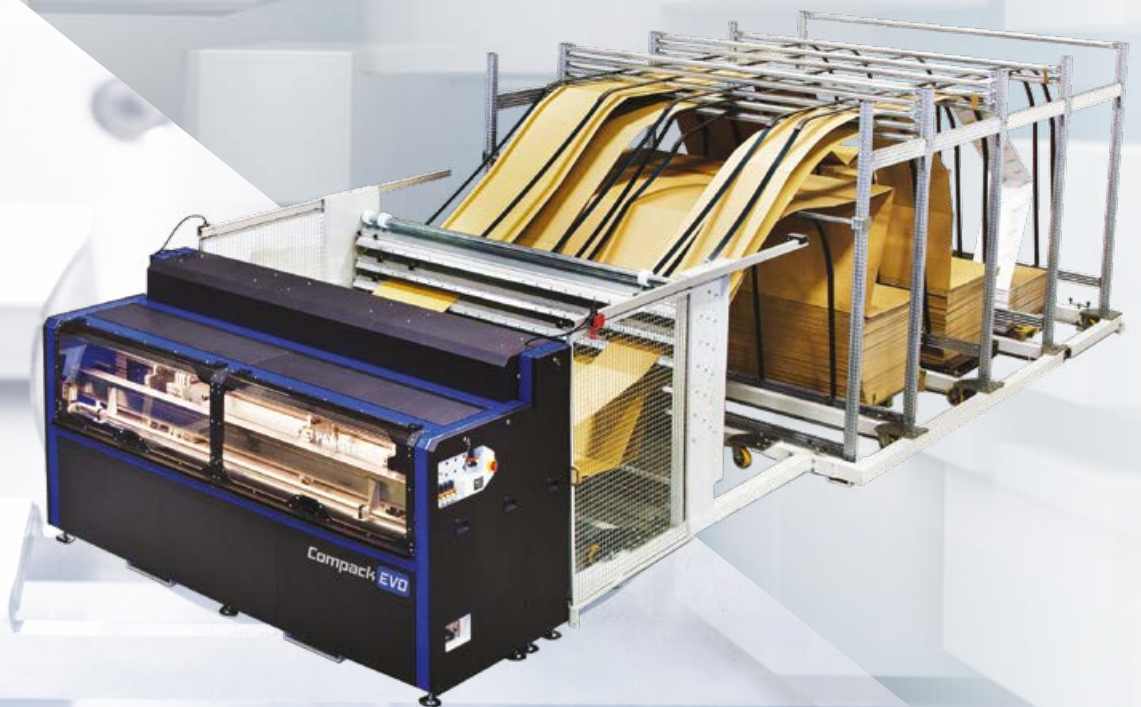
PANOTEC s.r.l.

Via G. Polese, 2 - 31010 Cimadolmo TV
T. +39 0422 432715 F. +39 0422 1821423
www.panotec.it ■ VAT IT02462930260



➤ **COMPACT EVO**
2.5

TECHNICAL DATASHEET



➤ **COMPACK EVO 2.5**

NEW DESIGN, HIGHLY PERFORMING AND ABSOLUTELY VERSATILE

Panotec presents **COMPACK EVO** and its innovative features, the result of 30 years of experience:

- **PERFORMANCE:** a highly productive premium product for constantly changing boxes
- **SEMPPLICITY:** software **BOXLINK PRO®** user-friendly, efficient and flexible
- **MODULAR DESIGN:** **COMPACK EVO** keeps pace with your business



➤ **MANAGEMENT SOFTWARE BOXLINK**

BOXLINK PRO®

A user-friendly tool that will help you to manage the production and all extended features of **COMPACK EVO**:

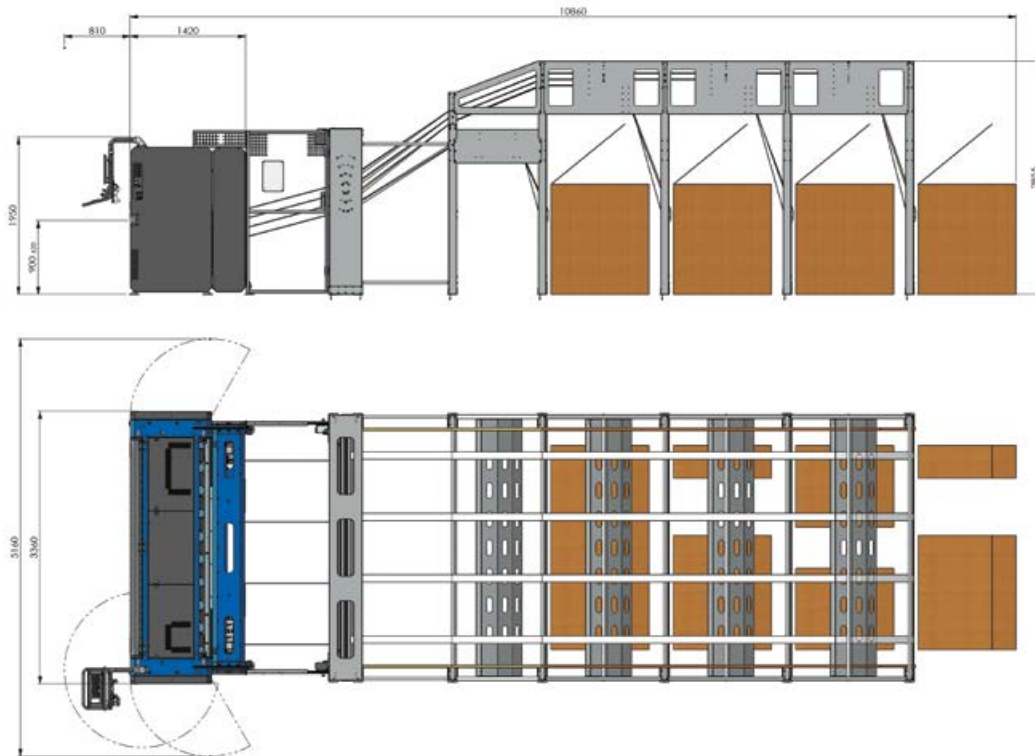
- many box models are pre-set, so you can start box production immediately
- box formats can be customized according to your special needs
- customer box archive, to save and retrieve all your box formats
- production lists to support production planning
- connected to the company network in order to manage boxes and production lists from your office or via your data management system
- production reports, remote SQL queries

BOXLINK PRO® includes the following advanced features:

- data storage of the box types, the optimal parameterization for each box in use is stored in order to make working processes more efficient and guarantee perfect boxes
- in addition to the 2D and 3D view mode of the boxes now also the animated closing process is available on screen, a great advantage when you're processing new or complex box models.
- completely customizable Combo boxes: create your packaging and save your settings, including the protections **COMPACK EVO** is able to produce
- enhanced diagnostics, the functioning can now be customized
- **BOX DESIGNER**, optional feature; fully immerse yourself into the world of computer-assisted design of customized packaging



► EXAMPLE OF DIMENSIONS IN FULL CONFIGURATION



► TOOLS FOR TRANSVERSAL AND LONGITUDINAL PROCESSING

COMPACT EVO is equipped with a transversal unit and up to 12 longitudinal units. During the production process, they position automatically for cutting and creasing.

OPTIONAL - SERRATED CREASING

Creasing and perforation in addition to standard creasing: it supports cardboard folding and improves the aesthetic results; particularly suitable to create packaging for very long profiles.

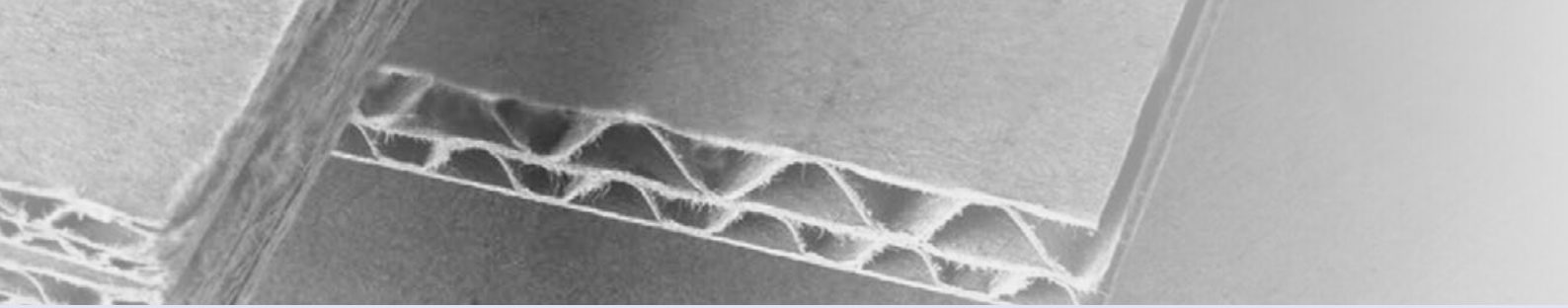
The management software enables you to produce boxes using both creasing modes (perforation and standard).



OPTIONAL ADD-ON ACCESSORIES

COMPACT EVO is extendable with a wide range of add-on components: printing systems for labelling and box identification, high definition printing, devices for measuring, glueing and strapping, etc.

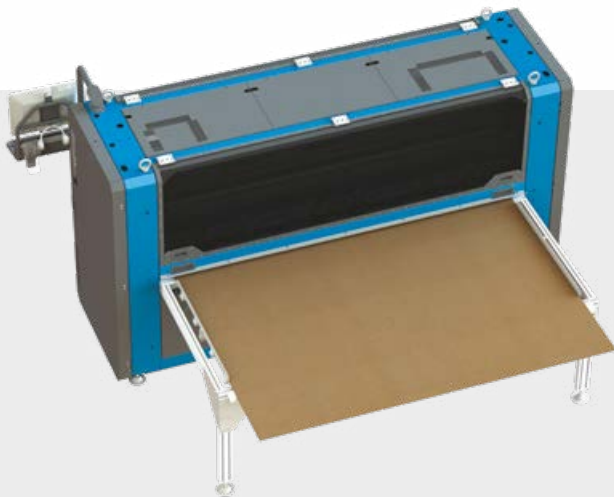
We will gladly provide you with more detailed information upon request.



➤ CARDBOARD FEED

3 different feeding options are available for the machine:

FANFOLD FORM (LAYOUT) ➤



➤ SINGLE SHEETS

SINGLE SHEETS AND FANFOLD FORM ➤





NEXTMODE 2.5

► TECHNICAL FEATURES

MACHINE DIMENSIONS (max. fanfold length)	2500 mm
CARDBOARD THICKNESS	from 2mm to 7mm
MINIMUM PROCESSED LENGTH	480 mm
CARDBOARD FEED SPEED	Longitudinal processing: 48m/min
STACK MAGAZINE	Available 1 up to 6 magazines with management option for up to 2 fanfolds per magazine
ALIMENTAZIONE	ELECTRICAL: 400v/50Hz (Europe) - 480/60Hz (USA)
	POWER: 10 kW
	COMPRESSED AIR: min. 6-7 bar (max. consumption 100NI/min)

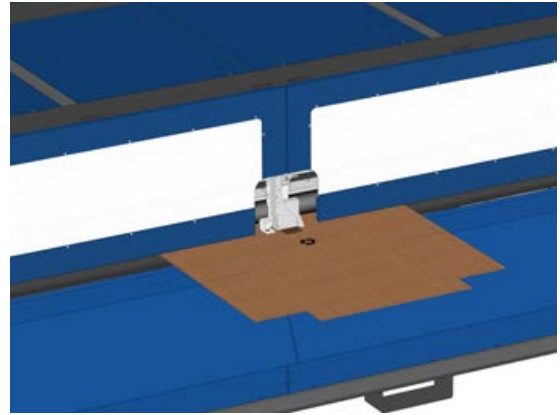


➤ **OPTIONALS**



SERRATED CREASING

The folding line and the box shape can be easily identified.

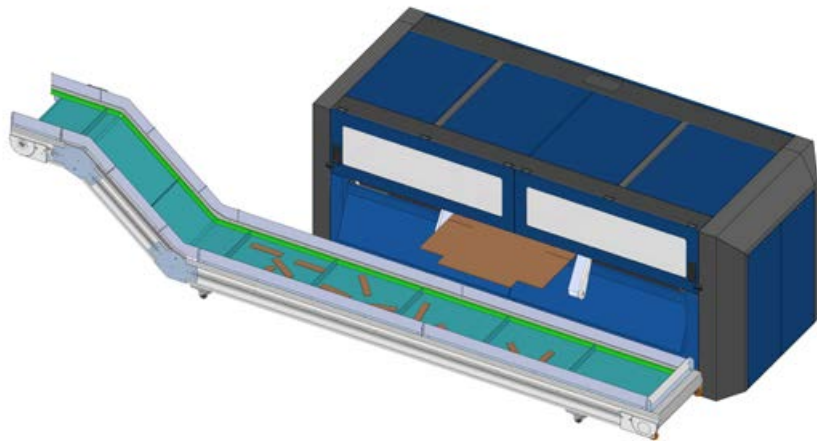


PRINTER

Nextmode can be equipped with a Jet HP 12.5 ink printer. It prints the surface of the box to make package labeling easier.

TRIM EXTRACTOR

Trim evacuation is simple and occurs during the output of the box.



All Panotec solutions can be connected to the company network and let you receive the production data from the customer's management system.



PANOTEC s.r.l.

Via G. Polese, 2 - 31010 Cimadolmo TV
T. +39 0422 432715 F. +39 0422 1821423
www.panotec.it ■ VAT IT02462930260



**➤ NEXTMODE
2.5**

TECHNICAL DATASHEET



➤ NEXTMODE 2.5

**FLEXIBILITY AND PRODUCTIVITY
AT THEIR HIGHEST LEVEL**



➤ BOXLINK™ SOFTWARE MANAGEMENT SYSTEM



WELCOME SCREEN



REPORTS SCREEN

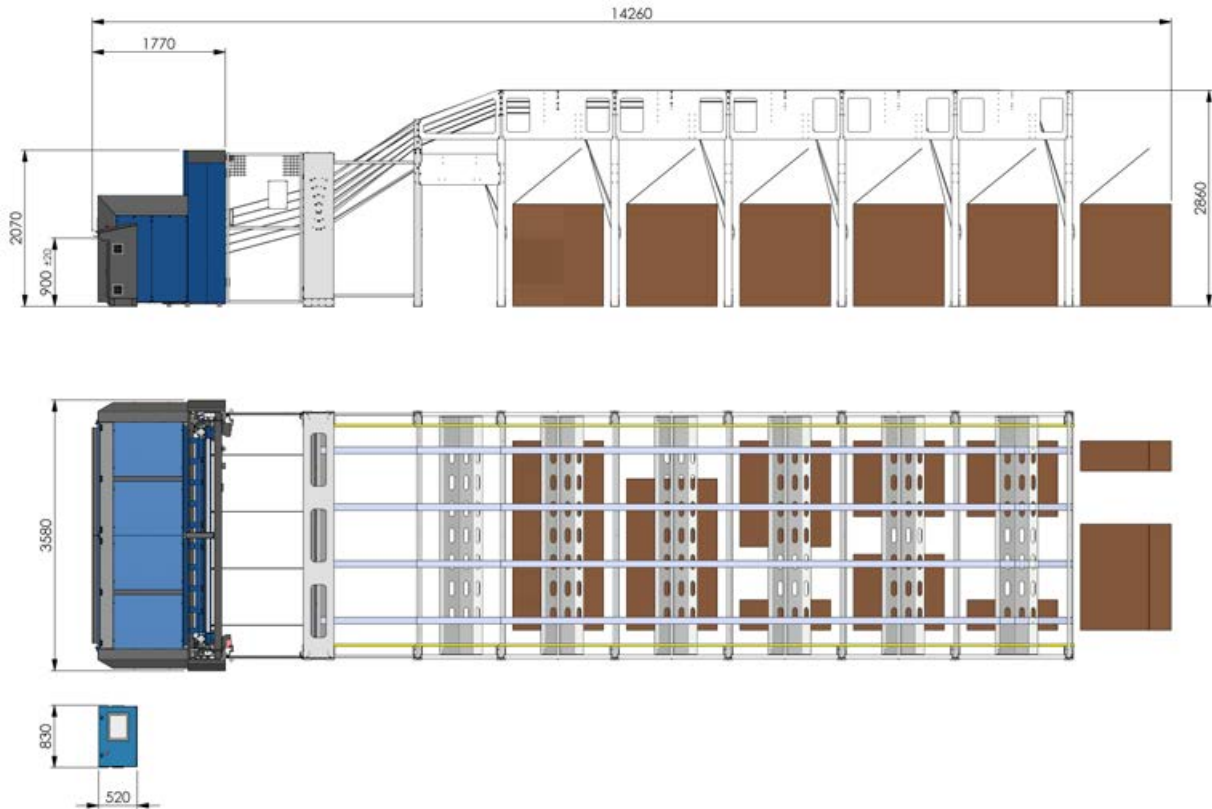


SCREEN CARDBOARD TRAYS



PRODUCTION SCREEN

► EXAMPLE OF DIMENSIONS IN FULL CONFIGURATION



► TOOLS FOR TRANSVERSAL AND LONGITUDINAL PROCESSING

Nextmode uses cutting and creasing units to process the boxes. Each unit can be equipped independently with different tools.

● TRANSVERSAL UNITS

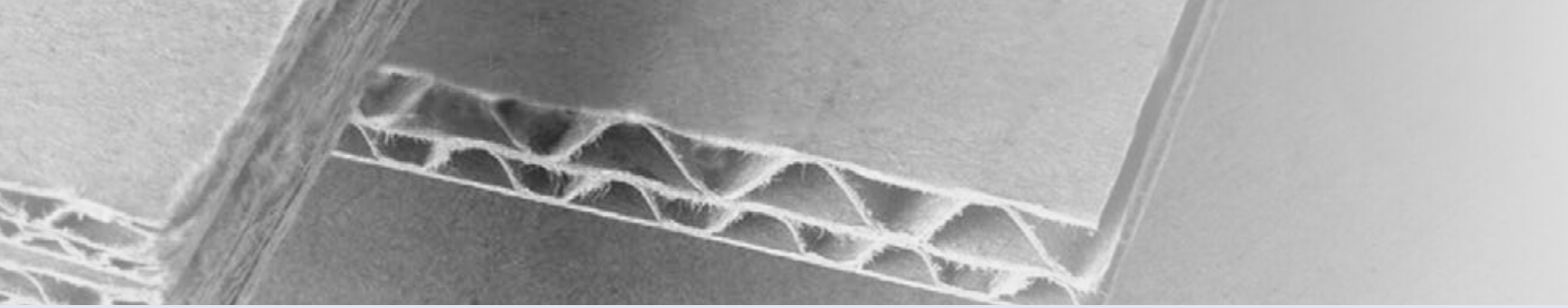
Toothed cut
Standard creasing

● LONGITUDINAL UNITS

Pressure cut
Standard creasing

CUTTING/ CREASING UNITS

NextMode uses cutting and creasing units to process the boxes. The longitudinal units use the pressure cut method, while the transversal unit can work with a toothed cut.



➤ FANFOLD FEEDING SYSTEM

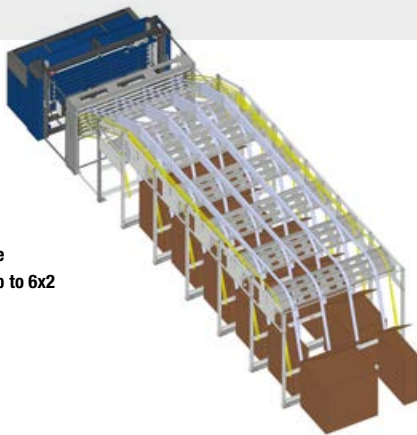
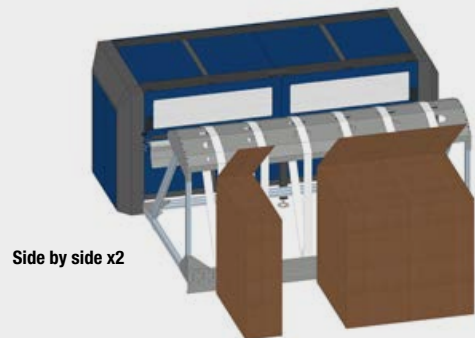


SINGLE FEEDER

This configuration allows the machine to work with cardboard sheets or with a single fanfold unit. Cardboard size: max. 2500 min 480 mm

MULTIPLE FEEDER FOR 2 SIDE BY SIDE FANFOLD UNITS

The machine can be supplied with 2 to 4 fanfold units that are positioned side by side. The machine automatically selects the required fanfold unit.



SELECTOR (2 TO 6 LEVELS)

Nextmode can be equipped with 2 to 6 cardboard magazines in line 2 fanfold units positioned side by side. Can be positioned in the magazines.

END OF CARDBOARD MANAGEMENT

Nextmode can be supplied with fotocells. In case the pallet is running out of cardboard, the supply is managed automatically, in order to keep up the production flow and reduce down times.



EGLUER

► TECHNICAL FEATURES

CARDBOARD THICKNESS	3 to 7 mm
BOX WIDTH WITH FLAPS CLOSED	Up to 1900 mm
BOX WIDTH IN FORWARD FEED	Min 210 mm
FLAP DIMENSIONS	Up to 925 mm
BOX FORWARDING SPEED	Up to 45 m/min
SERVICE REQUIREMENT	Compressed air 6 bar Electrical 400V - 50Hz – 3P+G European
PRODUCTIVITY	Up to 10 boxes/minute

► OPTIONAL

GLUE GUN AND TUBE FOR MANUAL GLUE DISPENSING

ALIGNMENT BOARD FOR LONG BOXES



PANOTEC s.r.l.

Via G. Polese, 2 - 31010 Cimadolmo TV
T. +39 0422 432715 F. +39 0422 1821423
www.panotec.it ■ VAT IT02462930260



➤ E-GLUER

TECHNICAL DATA SHEET

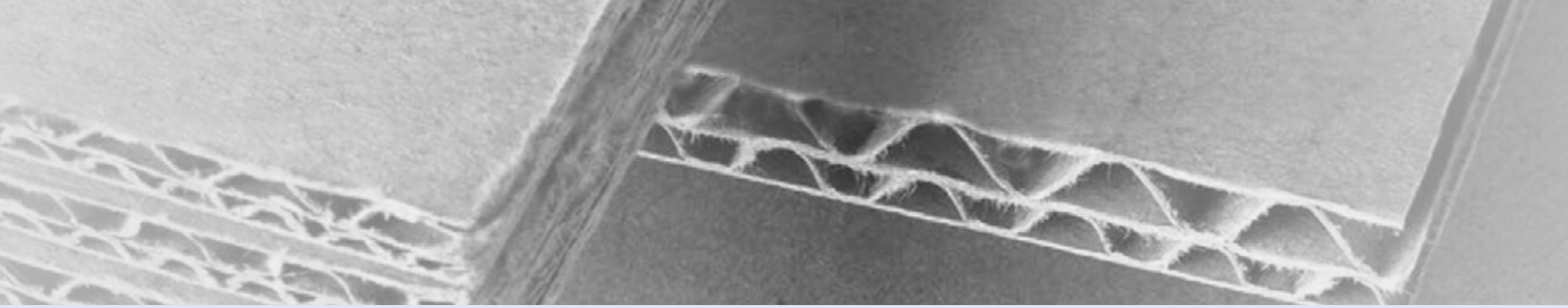


GLUING MACHINE FOR SMALL AND MEDIUM SIZED AMERICAN BOXES



DESCRIPTION

The machine is particularly suitable for flexible production systems that produce small batches or boxes of different sizes. The machine glues the vertical flap (visible at the inside of the shaped box) to the sidewall of the American box making the box shaping process quicker and easier.



➤ FIELDS OF APPLICATION

The machine finds practical application in the following business sectors:

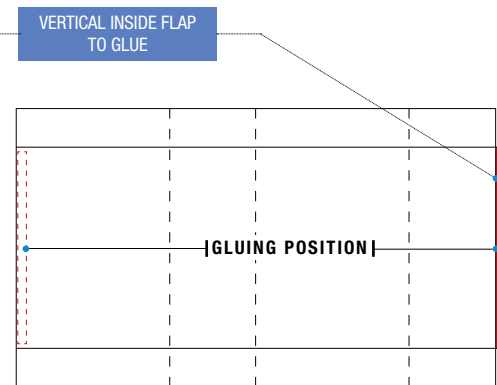
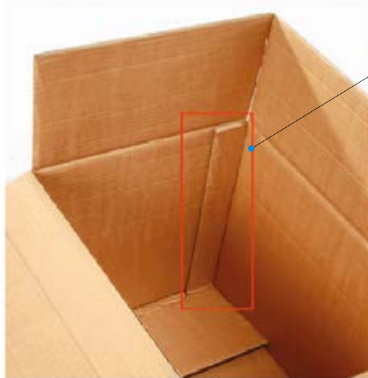
- E-COMMERCE
- SPARE-PARTS
- LOGISTICS

➤ ADVANTAGES

- It can be easily incorporated into the production processes
- It can be easily integrated in packaging areas, communication interfaces are not required
- The external walls of the box remain smooth since the vertical flap is glued on the inside of the box
- Automated detection of the required gluing length
- The machine operates rapidly and in a very flexible way

➤ FLAP GLUING

The machine operates with Hotmelt glue to glue the flap.

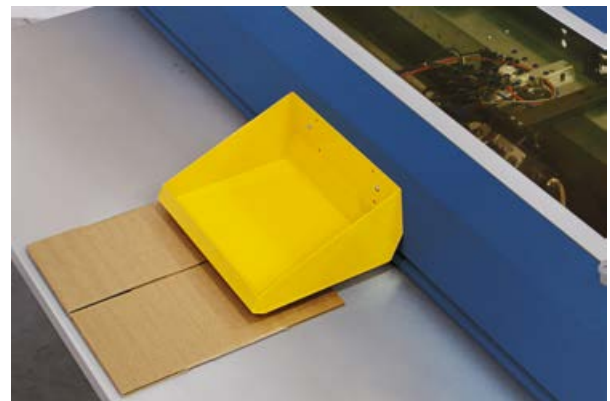


➤ FUNCTIONING

The machine operates as a stand-alone tool and does not require any interface connections.



The folded box has to be inserted into the machine with the flap to be glued upwards, positioned perpendicular to the machine.



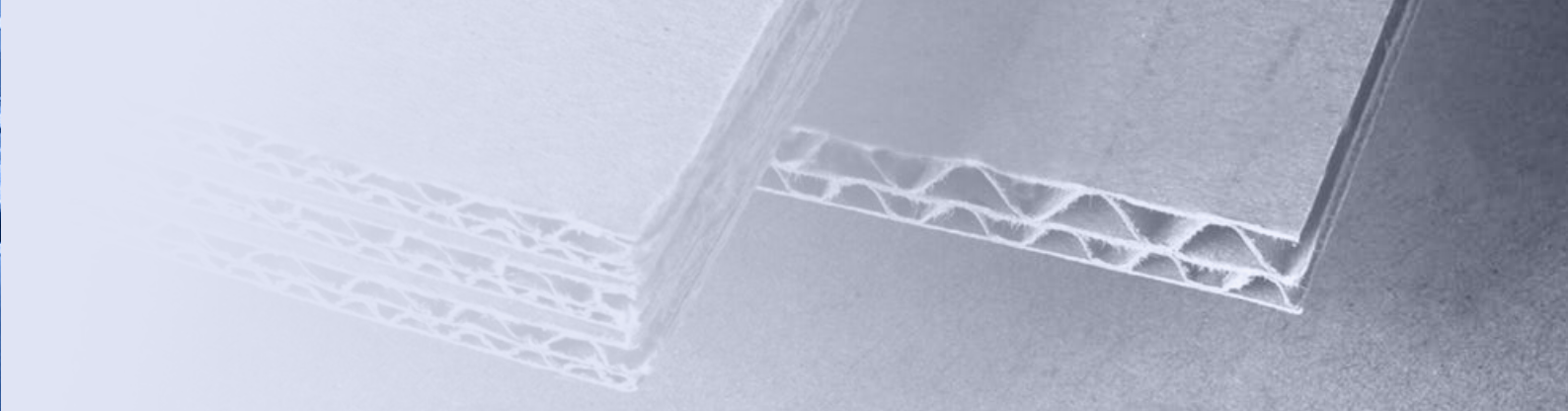
The box is automatically fed into the machine where it is glued, it then is released at the back or at the front of the machine (operating mode can be selected).



COMPACT 2.5

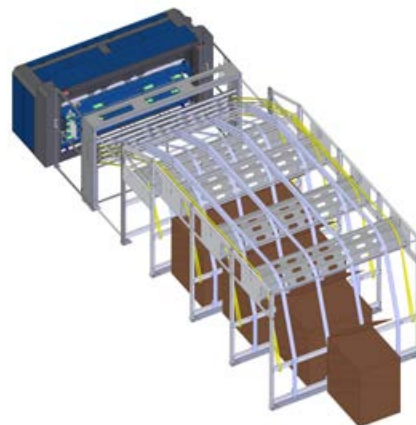
► TECHNICAL FEATURES

CARDBOARD WIDTH	Min. 400 mm ÷ Max. 2.500 mm
CARDBOARD THICKNESS	From 2 mm to 7 mm
MIN. LENGTH OF OPEN BOX	420 mm
CARDBOARD FEED SPEED	40 m/min
CARDBOARD FEED	- Basic version: Fanfold and/or single cardboard sheets - Automated Stack Magazine: Fanfold form
CONNECTIONS	ELECTRICAL: 400-480 V 50-60Hz
	POWER SUPPLY: 3 ÷ 4 kVA, depending on the configuration
	COMPRESSED AIR: min. 6-7 bar (max. consumption 115 NI/min)



➤ AUTOMATED FANFOLD STOCK MAGAZINE

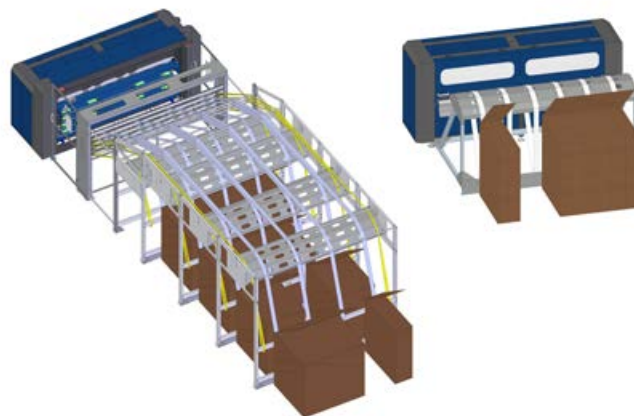
The basic model is equipped with a single fanfold magazine positioned behind the machine. The optional feature **Automated Magazine**, makes storage space behind the machine available; it provides 2, 3, or 4 depot spaces to store stacks of fanfold. **COMPACT 2.5 automatically chooses the most suitable cardboard to produce the required box.**



➤ SIDE BY SIDE

The Side by Side feature, available for fanfold cardboard, allows you to position the cardboard stacks side by side:

- **basic model (without automated magazine):** up to 4 cardboard side by side, for a total length of up to 2,500 mm
- **machine with automated magazine:** the number of processable cardboard doubles and up to 2 cardboard can be positioned in each depot of the magazine, for a total length of up to 2.500 mm



AVAILABLE ACCESSORIES THAT WILL:

- allow you to use very high cardboard stacks (220 cm)
- help the operator in the loading of new cardboard stacks

All Panotec solutions can be connected to the company network and let you receive the production data from the customer's management system.



PANOTEC s.r.l.

Via G. Polese, 2 - 31010 Cimadolmo TV
T. +39 0422 432715 F. +39 0422 1821423
www.panotec.it ■ VAT IT02462930260



➤ **COMPACT
2.5**

TECHNICAL DATASHEET



COMPACT 2.5

WELL-ESTABLISHED AND RELIABLE

COMPACT 2.5 offers those main features, which determined its success:

- **VERSATILITY:** many different box models available
- **SEMPPLICITY:** software **BOXLINK™** user-friendly, efficient and flexible
- **MODULAR DESIGN:** COMPACT 2.5 keeps pace with your business



MANAGEMENT SOFTWARE BOXLINK™

BOXLINK™

A user-friendly tool that will help you to manage the production and all extended features of **COMPACT 2.5**:

- many box models are pre-set, so you can start box production immediately
- 2D and 3D preview of box models
- box formats can be customized according to your special needs
- customer box archive, to save and retrieve all your box formats
- production lists to support production planning
- connected to the company network in order to manage boxes and production lists from your office or via your data management system
- production reports, remote SQL queries



WELCOME SCREEN



REPORTS SCREEN

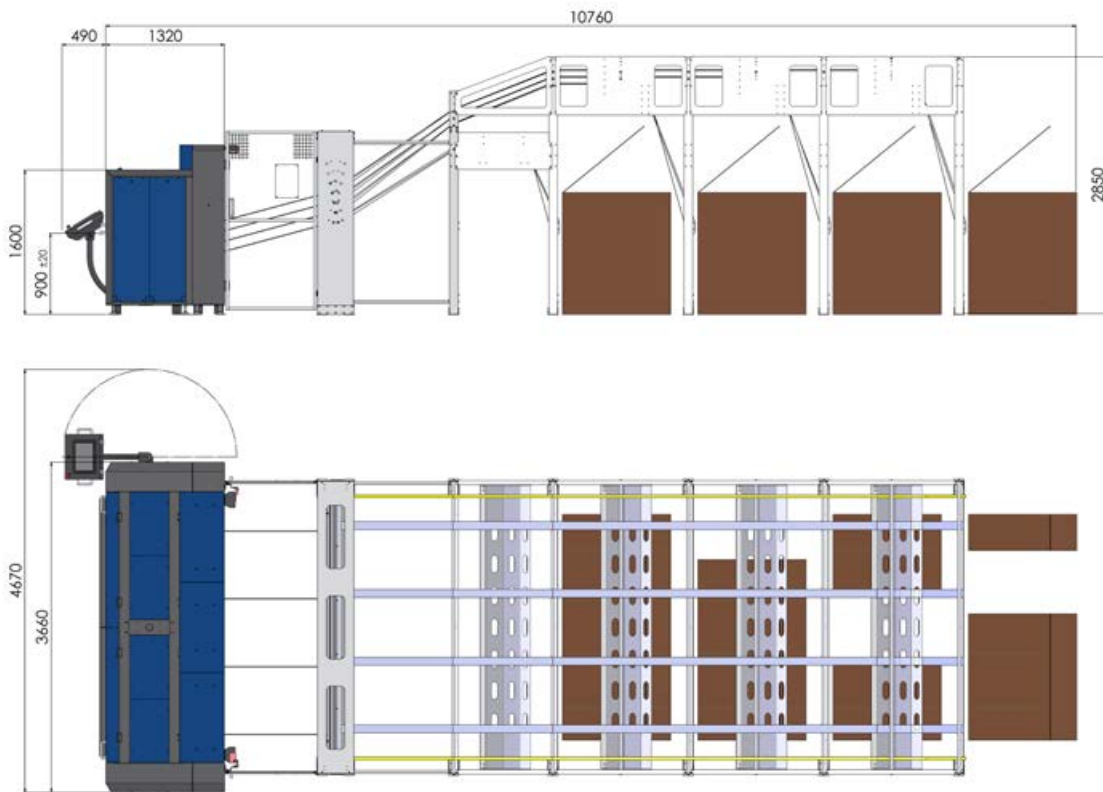


SCREEN CARDBOARD TRAYS



PRODUCTION SCREEN

► EXAMPLE OF DIMENSIONS IN FULL CONFIGURATION



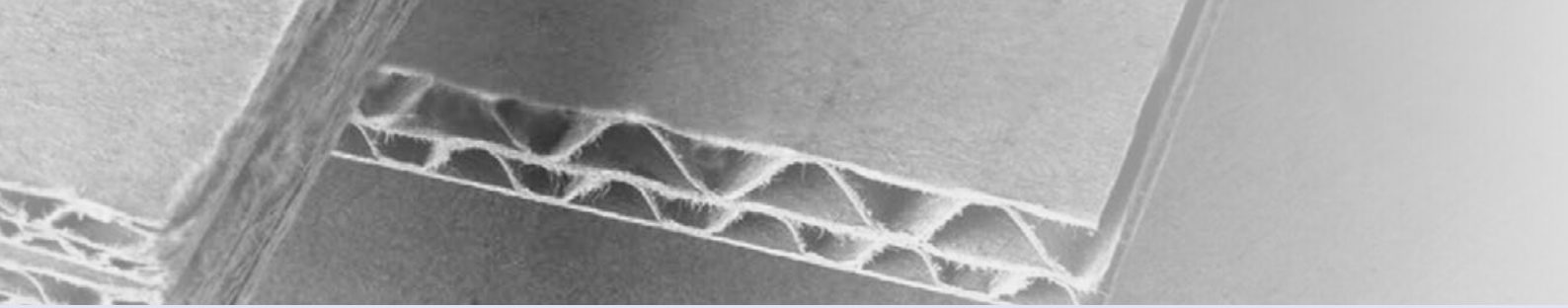
► TOOLS FOR TRANSVERSAL AND LONGITUDINAL PROCESSING

COMPACK 2.5 is equipped with a transversal unit and up to 12 longitudinal units. During the production process, they position automatically for cutting and creasing.

OPTIONAL ADD-ON ACCESSORIES

COMPACK 2.5 is extendable with a wide range of add-on components: printing systems for labelling and box identification, high definition printing, devices for measuring, glueing and strapping, etc.

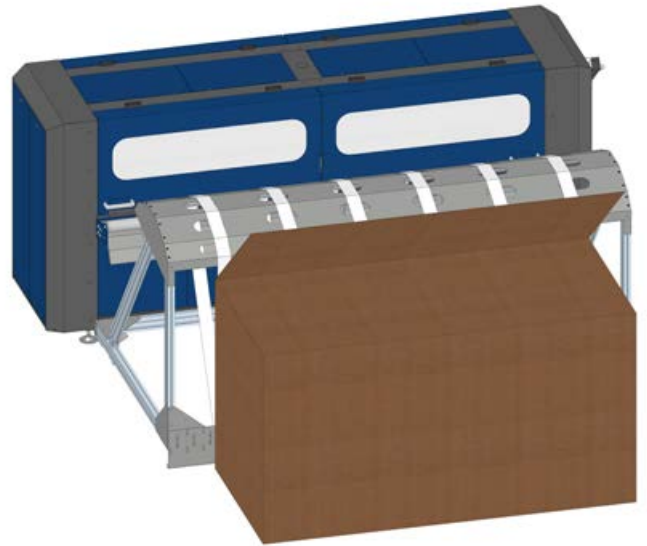
We will gladly provide you with more detailed information upon request.



➤ **CARDBOARD FEED**

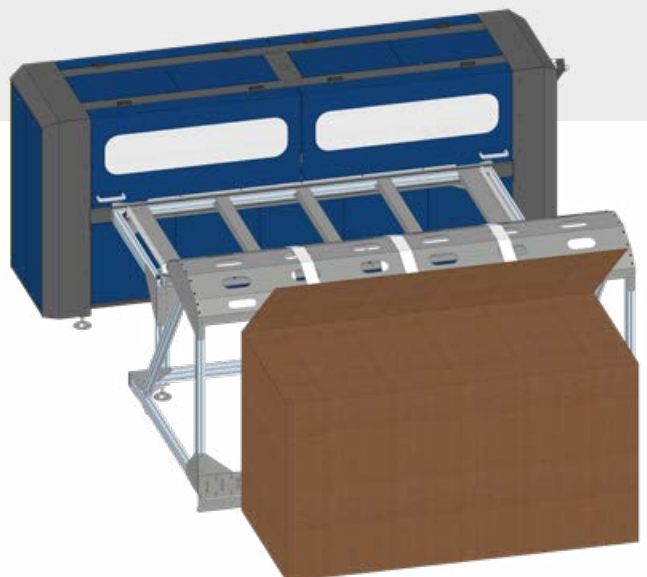
3 different feeding options are available for the machine:

FANFOLD FORM (LAYOUT)



SINGLE SHEETS

SINGLE SHEETS AND FANFOLD FORM





VARYPACK

► TECHNICAL FEATURES

PROCESSABLE BOXES	FEFCO 410 - 427 - 442
MIN./MAX. LENGTH	300 - 3000 mm
MIN./MAX. WIDTH	200 - 1300 mm
MIN./MAX. HEIGHT	20 - 300 mm
MAX. PRODUCT WEIGHT	75 kg
CARDBOARD THICKNESS	3 to 7 mm
PRODUCTION CAPACITY	Up to 15 boxes /minute
POWER	10 kVA
COMPRESSED AIR	6 - 7 bar
ELECTRICAL POWER SUPPLY	400V - 50Hz 3P+G



➤ OPTIONAL ACCESSORIES

PRODUCT DATA IDENTIFICATION

The system can be connected to a data-reading device (bar code scanner, RFID and the like) to read and transfer production data (box size, quantity, cycles, labelling/printing data etc.). Measuring systems with or without automatic alignment features are also available.

PALLETIZING

The system can be combined with an unloading and sorting system and a box palletizing system. A robot controlled palletization area can be easily integrated into the system of the line.

PACKAGING MACHINE

The system can be combined with Panotec packaging machines. Box production can be organized just in time upstream of the closing line. Management of non-standard boxes of different sizes is also possible.

FORMING AND COUPLING SYSTEM

The system can be combined with different devices that automatically form the boxes and couple the product to their packaging before it is closed up. The solutions mentioned here allow the system to operate in an independent and fully automated way without requiring an operator.

LABELING AND PRINTING

Box identification systems such as labelling machines and inkjet or other printers can be integrated into the system to identify the packed goods after they have been closed. There are many solutions available for both the position and the quality of prints and labels. The integration of identification devices is essential and therefore recommended for highly automated systems.

UNLOADING CONVEYOR BELT

Optional. The unloading station can be additionally equipped with product identification systems (labelling, printing or the like) and sorting or palletizing devices.

BELT FEEDER AND ALIGNMENT BELT

This unit helps to properly prepare and align the product so that it can be easily packed.

All Panotec solutions can be connected to the company network and let you receive the production data from the customer's management system.



PANOTEC s.r.l.

Via G. Polese, 2 - 31010 Cimadolmo TV
T. +39 0422 432715 F. +39 0422 1821423
www.panotec.it ■ VAT IT02462930260



➤ VARYPACK

TECHNICAL DATASHEET





COMPONENTS OF THE SYSTEM

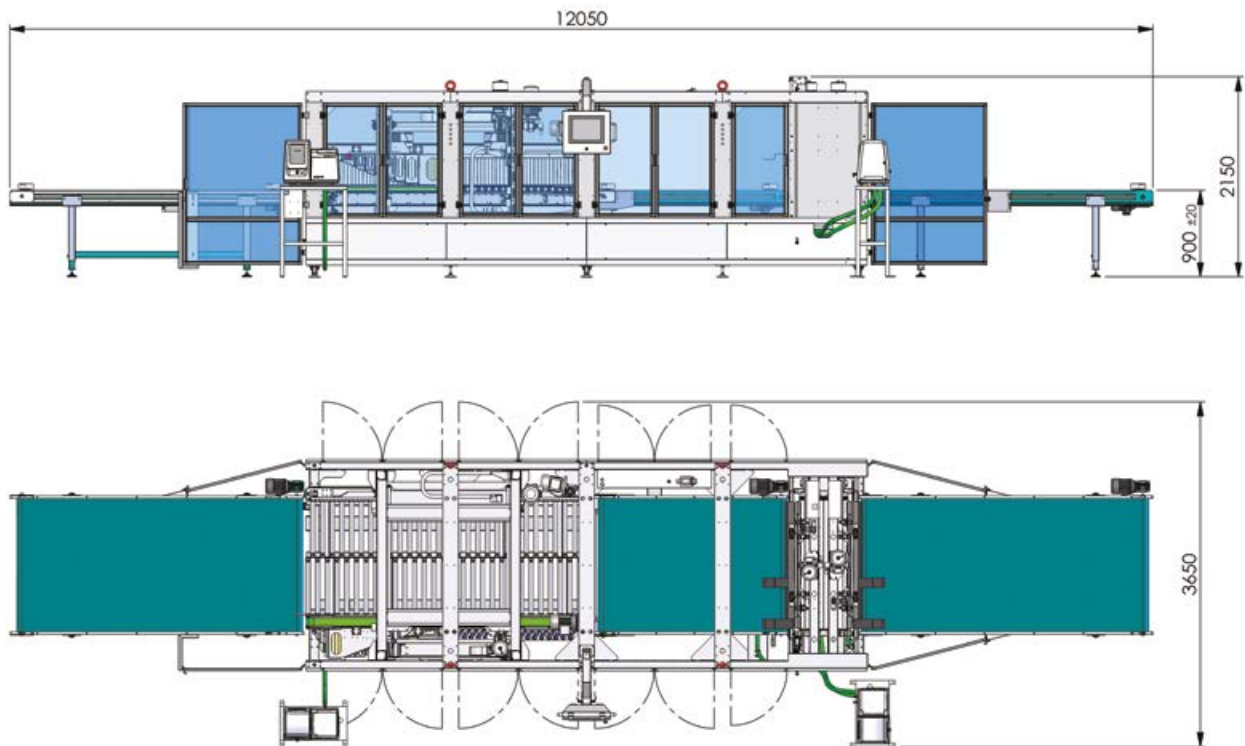
SYNCHRONOUS TRANSPORTATION SYSTEM

Motorized conveyor belt with flattening device for the box lids.

LONGITUDINAL PACKAGING STATION

- **BOX FORWARD FEED WITH MOTORIZED UNIT**
- **ADJUSTABLE SHOULDER WITH LIMIT STOP**
- **FIXED SHOULDER WITH:**
 - hot Melt Glue dispenser, folding device, glueing pressure unit

► EXAMPLE OF DIMENSIONS IN FULL CONFIGURATION



CONVEYOR BELT

Motorized conveyor belt used as temporary storage surface and/or to synchronize the product while the upper flap is closed.

TRANSVERSAL PACKAGING UNIT

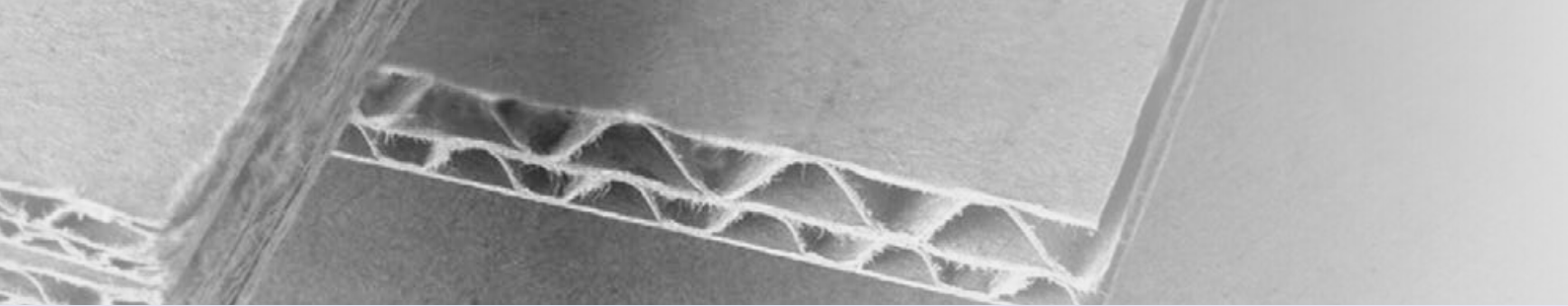
● CLOSING DEVICE FOR THE FRONT FLAP

● CLOSING DEVICE FOR THE BACK FLAP, BOTH ARE COMPOSED OF:

- transversal sliding Hot Melt glue application device, pneumatic and electronic folding device and glue pressure device

HOT MELT CONSOLLE

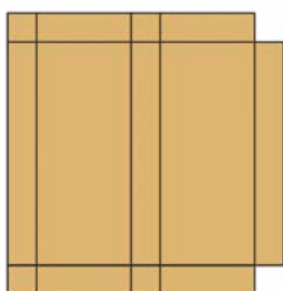
Melting tank, thermo-regulated pipes and dispensers supplying Hot Melt glue during the closing procedure.



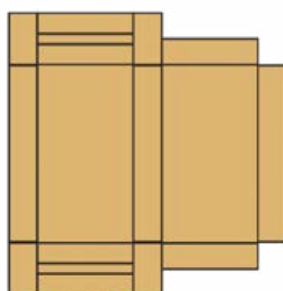
➤ FEATURES AND FUNCTIONS

EXAMPLES OF SUITABLE FEFECO BOXES

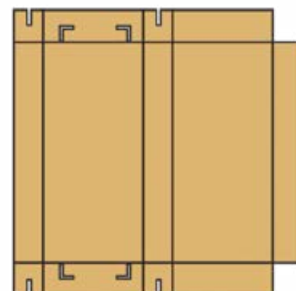
The system automatically closes the longitudinal and the two transversal flaps (top and bottom parts) and glues them with Hot Melt glue. The line operates with the following box types:



fefco 410

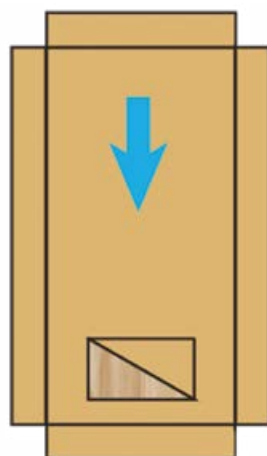
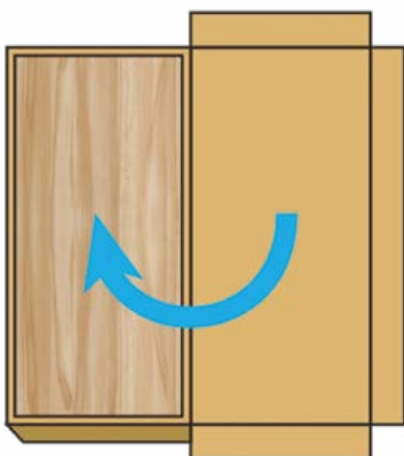


fefco 427



fefco 442

The boxes are inserted into the Panotec closing line correctly aligned, with a pre-formed bottom and a lowered upper flap.



The line is equipped with a control terminal, so that the operator can key in all information concerning the required product batches, such as:

- Box size of the batch (length, width, height)
- Quantity

TYPE OF CLOSURE

- longitudinal (longitudinal flap only)
- transversal (two transversal flaps only)